

STATE OF NORTH CAROLINA
DEPARTMENT OF TRANSPORTATION
HIGHWAY DIVISION 6

PLANS

Let Date: May 15, 2024

CONTRACT ID: DF00479

TIP NO.: -----

FEDERAL AID NO.: STATE FUNDED

WBS ELEMENT NO.: 2024CPT.06.21.20432.1

ROUTE NO.: VARIOUS

LOCATION: VARIOUS

COUNTY: HARNETT

**TYPE OF WORK: ASPHALT SURFACE TREATMENT – DOUBLE SEALS; HOT Poured RUBBER
ASPHALT JOINT SEALER & HOT SPRAY THERMOPLASTIC PAVEMENT MARKINGS**

LENGTH OF PROJECT: 31.594 MILES

Harnett County AST

Contract-DF00479

H
N
S
T
O
N

Barclaysville

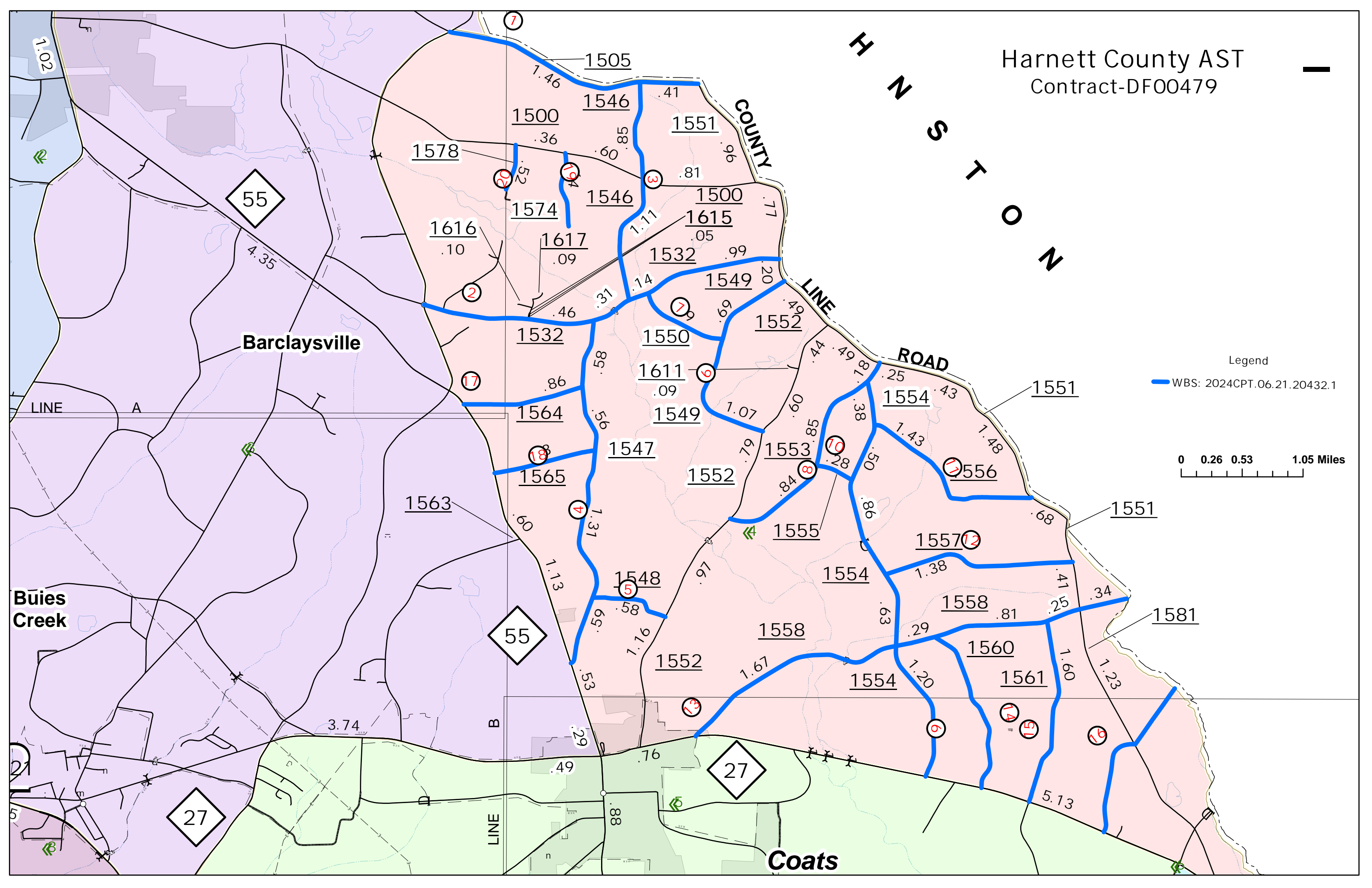
Coats

Buies Creek

Legend

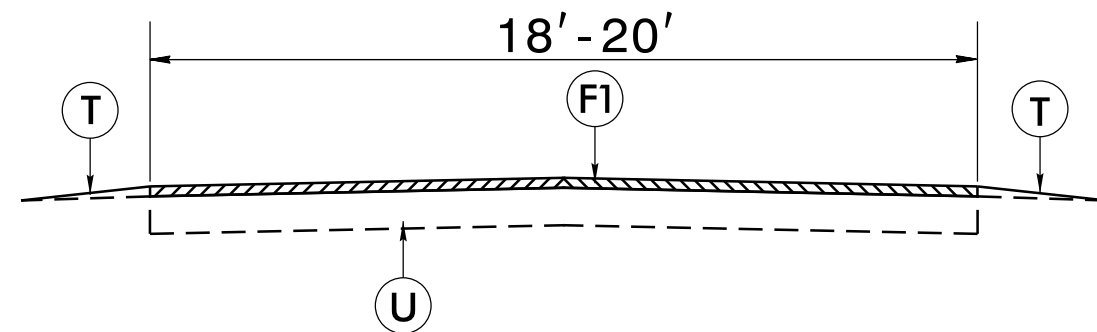
— WBS: 2024CPT.06.21.20432.1

0 0.26 0.53 1.05 Miles



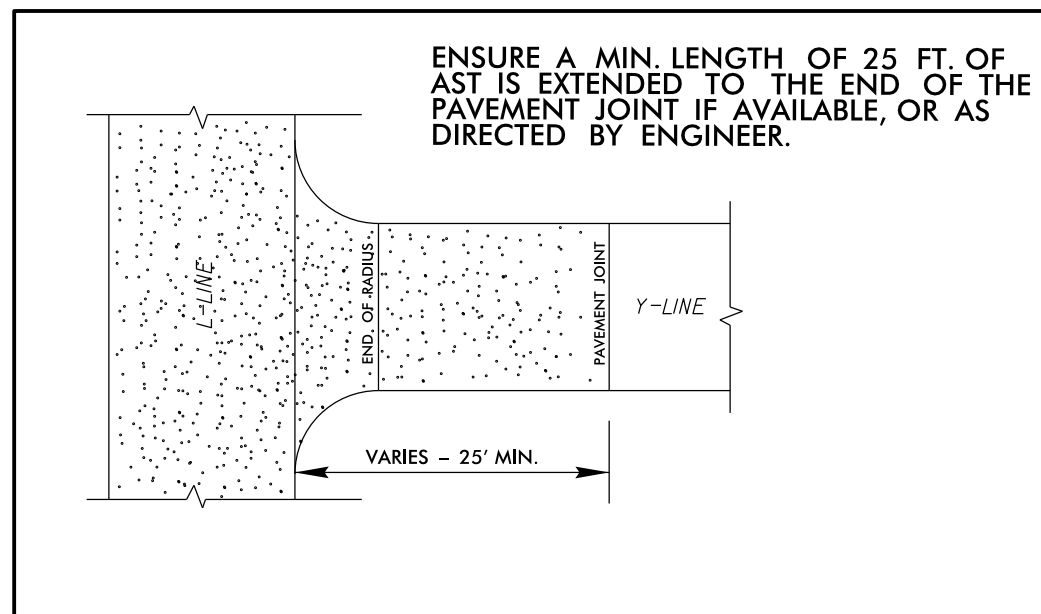
PAVEMENT SCHEDULE

F1	DOUBLE SEAL PLACED ACCORDING TO THE SPECIAL PROVISION
T	EXISTING SHOULDER
U	EXISTING ASPHALT PAVEMENT



TYPICAL SECTION NO. 1

PLUS HOT POURED RUBBER ASPHALT JOINT SEALER,
SEE SUMMARY OF QUANTITIES



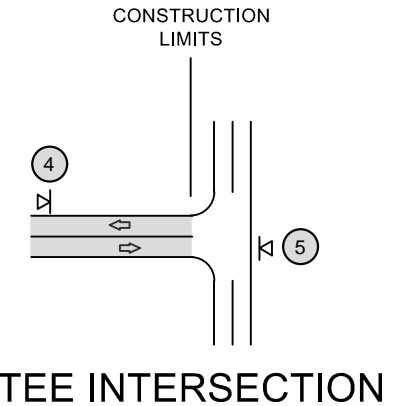
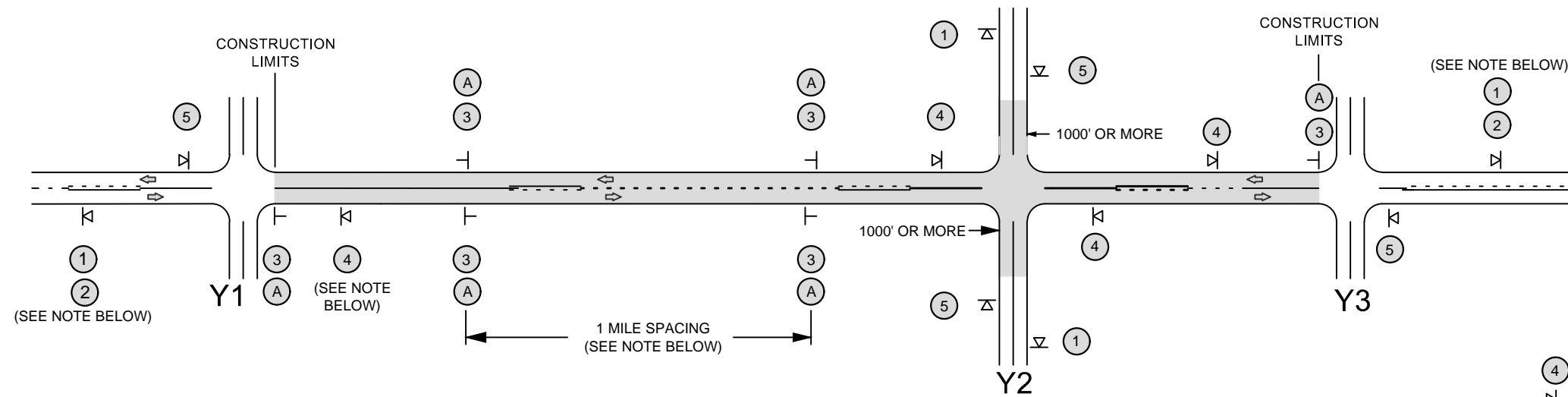
DETAIL 1

-Y- LINE INTERSECTION TREATMENT

16-APR-2024 15:59
 I:\Engineering\District 2\2024\AST\DF00479_2024CPT.06.21.20432.1.AST_Hornett\Plans\typ.dgn
 6/2/99

SIGNING FOR ASPHALT SURFACE TREATMENT

LEGEND	
	PORTABLE SIGN
	STATIONARY SIGN
	DIRECTION OF TRAFFIC FLOW



MAINLINE (-L-) SIGNING

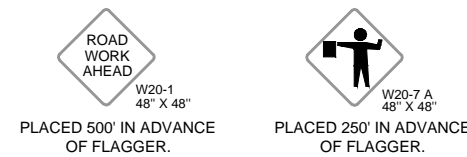
-Y- LINE SIGNING

SIGNING NOTES AND PLACEMENT PER DIRECTION	①		- PLACE 1000' PRIOR TO BEGINNING OF CONSTRUCTION LIMITS. ONLY USED ON -Y- LINES IF RESURFACING LIMITS EXTEND 1000' ALONG -Y- LINE.
	②		- SIGN #2 ONLY USED WHEN RESURFACING LIMITS ARE 2 OR MORE MILES IN LENGTH. ROUND UP TO THE NEAREST WHOLE NUMBER. DO NOT USE FRACTIONAL OR DECIMAL NUMBERS.
	③	 	- ALTERNATE THE FOLLOWING TWO SIGNS: - STARTING WITH "LOOSE GRAVEL" (W8-7) FOLLOWED BY "UNMARKED PAVEMENT". - PLACE INITIALLY AT THE CONSTRUCTION LIMITS AND SPACED 1 MILE APART THEREAFTER. - AT TEE INTERSECTIONS INSTALL INITIALLY 0.5 MILE FROM INTERSECTION AND SPACE 1 MILE APART THEREAFTER.
	A		PLACE INITIALLY AT THE CONSTRUCTION LIMITS AND SPACED 1 MILE APART THEREAFTER. IF NO -Y- LINES EXIST, PLACE 2ND SET 1/2 MILE FROM THE CONSTRUCTION LIMITS AND THEN SPACE 1 MILE THEREAFTER. SPEED LIMIT SIGN MAY BE PLACED ON SAME POST AS LOOSE GRAVEL SIGN, IF DESIRED.
	④		- THESE ARE FOR -Y- LINES THAT ARE "THROUGH" ROADWAYS. DEAD END AND SUBDIVISION ROADS ARE NOT "THROUGH" ROADWAYS. - INSTALL 500' +/- FROM EACH -Y- LINE APPROACH AS SHOWN ABOVE. - FOR MULTIPLE -Y- LINES THAT ARE SEPARATED BY 0.25 MILES OR LESS, TREAT AS A SINGLE UNIT AND INSTALL WITHIN 500' OF EACH APPROACH. - A MAXIMUM OF 2 SIGN SETS PER MILE. DO NOT INSTALL WHEN -Y- LINES ARE WITHIN 0.5 MILES FROM "END ROAD WORK" SIGN.
	⑤		PLACE 500' FOLLOWING THE END OF CONSTRUCTION LIMITS OR AS SHOWN WHEN WORK ENDS AT A 3-WAY TEE INTERSECTION.

STATIONARY SIGNING NOT REQUIRED FOR THE FOLLOWING -Y- LINE CONDITIONS:

- 1) LESS THAN 1000' OF RESURFACING ALONG -Y- LINE
- 2) SUBDIVISION ROADS
- 3) DEAD END ROADS

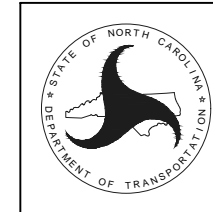
WHEN PAVING/CONSTRUCTION ACTIVITIES PROCEED ACROSS AN UNSIGNED -Y- LINE, PORTABLE ADVANCE WARNING SIGNS SHALL BE USED ALONG THE -Y- LINE AS SHOWN BELOW. REMOVE UPON COMPLETION OF WORK.



NOTE:
IT IS THE CONTRACTOR'S RESPONSIBILITY TO ENSURE THE PROPER PLACEMENT AND LOCATION OF WORK ZONE SIGNING PER THE STANDARD DRAWING. NCDOT HAS THE RIGHT TO INSPECT THE PLANNED LOCATIONS AND REQUIRE ADJUSTMENT BY THE CONTRACTOR, AS NEEDED, OR AS DIRECTED BY THE ENGINEER.

THE ABOVE SIGNS ARE ALL THAT ARE REQUIRED FOR A CONTRACTOR TO BEGIN A RESURFACING CONTRACT. ANY ADDITIONAL SIGNS REQUESTED BY NCDOT DIVISIONS SHALL BE INSTALLED WITHIN 7 BUSINESS DAYS OF THE START OF CONTRACT WORK.

MAPS LESS THAN 2 MILES
FOR AST RESURFACING MAPS WITH CONSTRUCTION LIMITS LESS THAN 2 MILES IN LENGTH, USE A STATIONARY "LOOSE GRAVEL" SIGN AT THE BEGINNING CONSTRUCTION LIMIT FOLLOWED BY AN "UNMARKED PAVEMENT" SIGN MIDWAY THROUGH AND AN "END ROAD WORK" SIGN AT THE END CONSTRUCTION LIMIT.



REVISED - 12-13-2018
NCDOT - DIVISION 6
ADVANCE WARNING SIGNS FOR 2-LANE ROADWAY ASPHALT SURFACE TREATMENT